

# A SMARTER WAY TO SCAN

**We didn't invent the intraoral scanner.  
We reinvented it.**

The CS 3600 intraoral scanner from Carestream Dental puts smarter scanning right in the palm of your hand. Whether your practice handles restorative, orthodontic or implant cases, the CS 3600 adapts to your needs and makes digital impression capture amazingly fast and easy.

The CS 3600's unique continuous scanning capabilities and live scanning warnings enable you to easily acquire all the essential data you need to create an impression in record time. The Intelligent Matching System allows you to fill in missing scan information for any area in the data set. Simply jump to any position in the mouth—there's no need to indicate an exact location or follow a specific direction.



**GET ALERTED ON  
MISSING DATA**

*Green arrows and green and yellow highlights alert you of any gaps or holes that need to be rescanned for optimal detail.*



**SEE YOUR WORLD IN STUNNING  
FULL HD 3D COLOR**

*Enhanced image quality and vibrant color better reflect reality and help you communicate with your patients, labs and referrals.*

# FEATURES THAT MAKE YOUR PATIENTS—AND YOU—SMILE

*“Since using the CS 3600, I’ve been impressed, not only with the speed, but with the accuracy of the scanner.”*

**DR. MARK CAUSEY,  
CAUSEY ORTHODONTICS,  
CUMMING, GA**

Interchangeable tips come in three styles<sup>1</sup>—including the shortest autoclavable tip height in the industry—to optimize scanning and patient comfort. The tips can be autoclaved up to 60 times, reducing consumable costs and ensuring proper sterilization.<sup>2</sup>

The CS 3600 produces highly accurate full HD 3D color images with enhanced quality and texture, which facilitates doctor/patient communication and increases case acceptance.

## STREAMLINED WORKFLOW

Choose from three dedicated continuous scanning workflows: restorative, orthodontic and implant-borne restorative.

## OPEN SYSTEM FLEXIBILITY

Enjoy clearer communication with your lab with the versatility of DICOM, open .STL and .PLY files.

## OPTIMIZED SCANBODY WORKFLOW

Helps to prevent image mismatches that can occur when using multiple scanbodies on a single case.

## AESTHETIC SCANS THAT REFLECT REALITY

Adaptive hole filling automatically identifies holes and selects the appropriate anatomical color for optimal aesthetic outcome.

## ACCURACY AT YOUR FINGERTIPS

Surpasses leading competitors by delivering the best performance in terms of overall trueness.<sup>3</sup>

## ADVANCED ERGONOMIC DESIGN

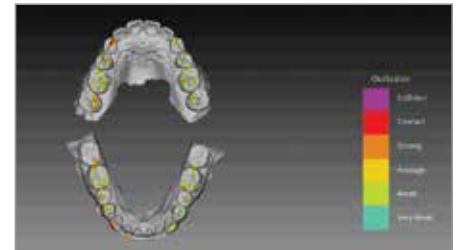
Improve image capture and patient comfort with three rounded, interchangeable tips and the shortest autoclavable tip height on the market.<sup>1</sup>



Green arrows display the ideal direction in which the user should rescan missing information, providing real-time feedback that significantly increases scanning efficiency.



Yellow and green highlights alert you of any gaps or holes in the scan, indicating that the area needs to be rescanned for optimal detail.



The software provides a pressure map of the occlusal surface, allowing you to better analyze patient occlusion.

**CS 3600**

© Carestream Health, Inc. 2017. 15979 AL CS 3600 SS 0917

<sup>1</sup>Posterior tip is a work in progress, not available for sale pending medical device regulatory clearances and registrations

<sup>2</sup>Tips can be autoclaved up to 60 times if the exposure is limited to 134°C at no more than 4 minutes and if gauze is used, as outlined in the CS 3600 Family Safety, Regulatory, and Technical Specifications User Guide (9J8269)

<sup>3</sup>Imburgia et al. BMC Oral Health (2017) 17:92 DOI 10.1186/s12903-017-0383-4